

JAMES EDWARD

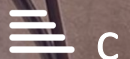
Comprehensively Cared For



Plimsoll Road

, London, N4 2ED

£6,500 Per Month



Plimsoll Road



Description

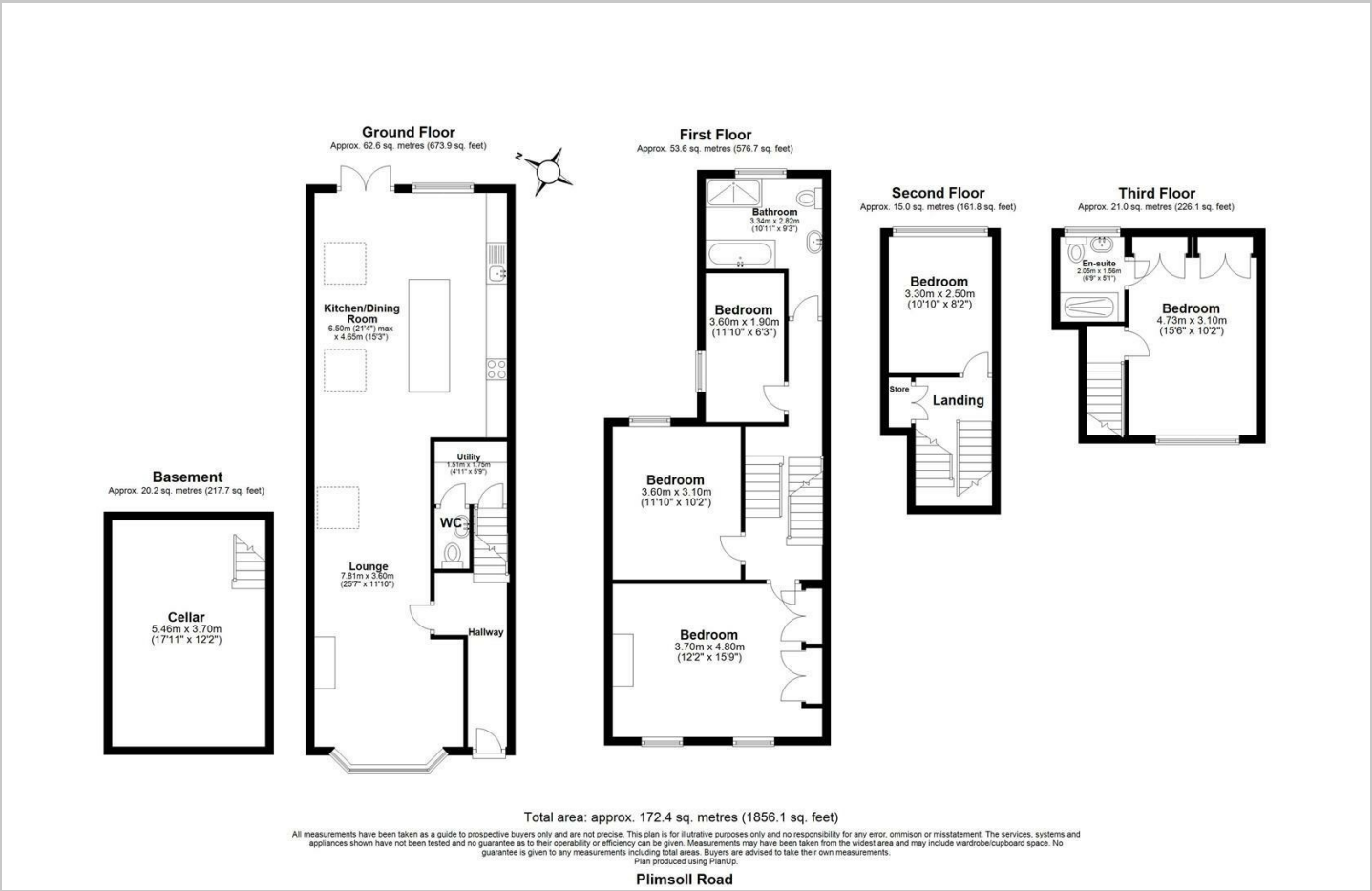
Architecturally designed family home offering five bedrooms and a beautiful open plan living space, refurbished to an extremely high standard, in the heart of Highbury.

- Five Bedrooms
- Harvey Jones Kitchen
- Close to Arsenal and Finsbury Park Stations
- Unfurnished
- Utility Room
- Refurbished to a High Standard
- Quiet Location
- Available end of March
- Three Bathrooms
- In Catchment to "Outstanding" Schools





Floor Plan



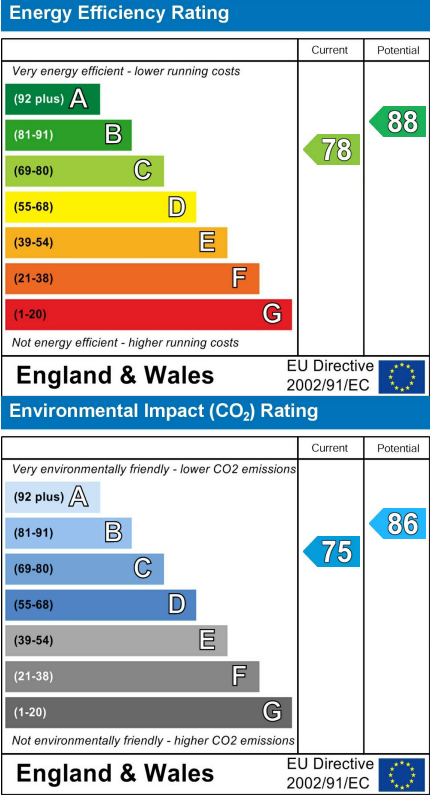
Area Map



Viewing

Please contact our James Edward Office on 020 7952 5197 if you wish to arrange a viewing appointment for this property or require further information.

Energy Efficiency Graph



These particulars, whilst believed to be accurate are set out as a general outline only for guidance and do not constitute any part of an offer or contract. Intending purchasers should not rely on them as statements of representation of fact, but must satisfy themselves by inspection or otherwise as to their accuracy. No person in this firms employment has the authority to make or give any representation or warranty in respect of the property.